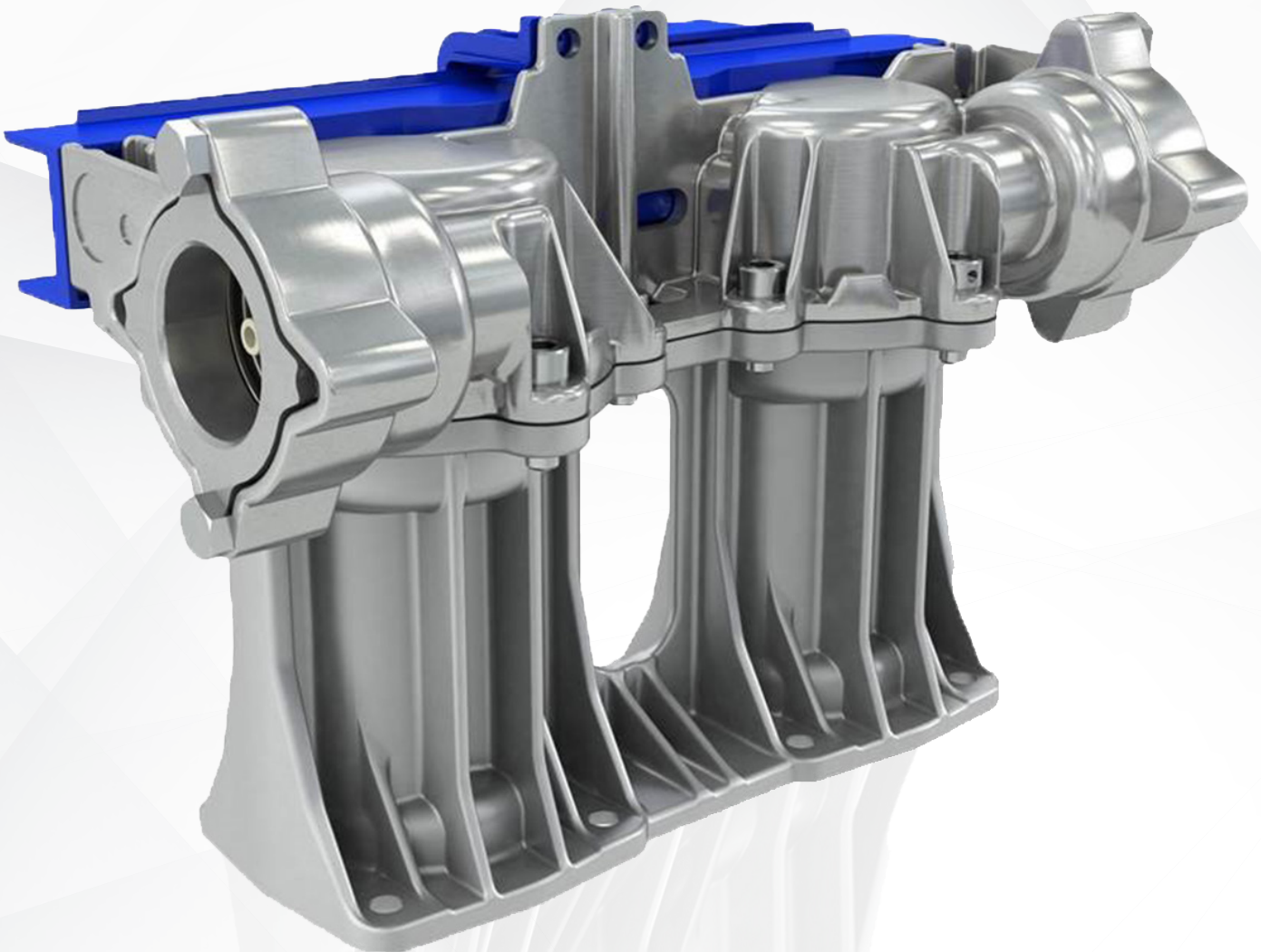


Wayne
FUELING SYSTEMS

WAYNE XFLO™ FUEL METER

Save fuel. Save time.
Save money.



Don't settle for less.

Without accurately-calibrated dispensers, you could be unintentionally giving away fuel every time customers fill their tanks. The Wayne Xflo™ fuel meter can make this a thing of the past. With fewer moving parts and additional calibration points, the Xflo meter sets the standard in metering accuracy. It's not only accurate, it's also 20-30% faster than traditional piston meters. And faster, more accurate transactions mean more profit to your bottom line.

So accurate, you may never have to calibrate it again

With the Xflo meter, expect more accurate metering and less frequent calibration. In both lab and field tests, the Xflo meter demonstrated no discernible drift after metering millions of litres of fuel — all were still perfectly calibrated. That means potential fuel savings of up to thousands of gallons per year.

Peerless performance and uncompromised control

The Xflo meter's phenomenal accuracy and throughput are the result of revolutionary engineering and precision manufacturing. Wear and tear are minimized thanks to the Xflo meter's design, featuring fewer moving parts and sealing surfaces. This limits the possibility of meter drift. The Xflo meter also has multiple calibration points, providing you with better accuracy across the entire flow range.

Extraordinarily adaptive

The Xflo meter is both accurate and tough, making sure your investment lasts for years. Building on our tradition of dependable products, the Xflo meter's efficient hydraulic design features tandem screw rotors made of hardened bearing steel in a compact housing. This rugged design is perfect for varied fuel environments. The Xflo meter is built to handle millions of litres over its lifetime, in all flow conditions, fluid temperatures, densities and viscosities, and to be used with the same fuel types compatible with traditional piston meters.

- Increase profits by eliminating fuel loss: save potentially thousands of litres every year.
- Protect your investment: virtually eliminate recalibration costs.
- Expect field-proven performance: over 3,000 meters successfully installed using similar/comparable technology.
- Improve your throughput: Dover Fueling Solutions' fastest meter ever.

Astonishing performance, outstanding security

At today's fuel prices, securing your investment is more important than ever. High-speed serial communication to the Wayne iGEM™ pump computer and a lack of exposed gear sets make the Xflo meter highly resistant to tampering. Employing unique calibration tables and serial numbers that must be recognized by the iGEM enhances transaction security.

Customer-centric innovation since 1891

Dover Fueling Solutions engineers designed the Xflo meter module to mount in the same form factor as existing Wayne iMeter™ fuel meters installed in our recent dispenser models. This makes it easy to replace meters in existing dispensers with iGEM electronics. The Xflo meter is available for use with E85 and Ultra High Capacity applications, with future plans for use in LPG applications.